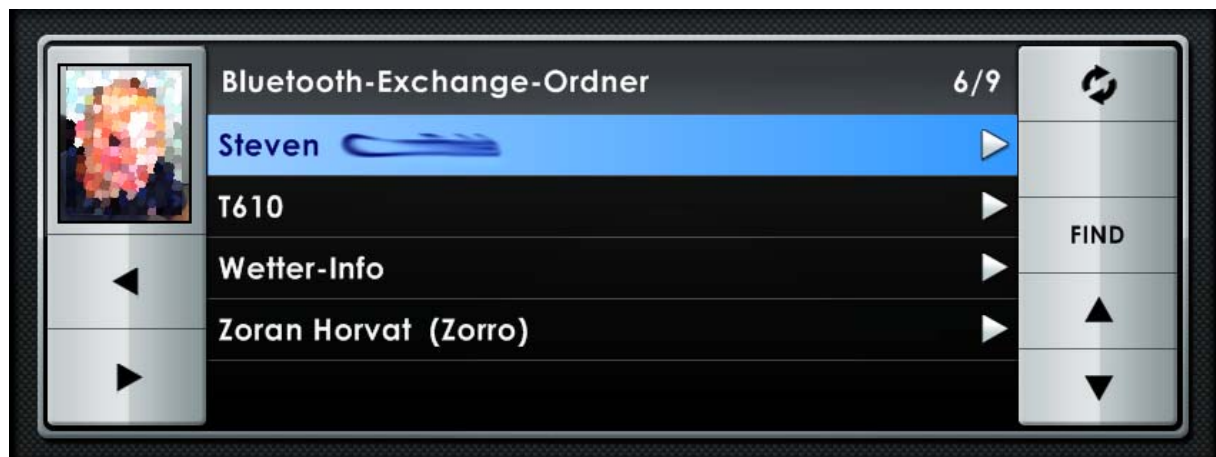


Contacts

Centrafuse™ Plug-in



User Manual

Author: Zoran Horvat
Updated: 2007-12-06

Table of content

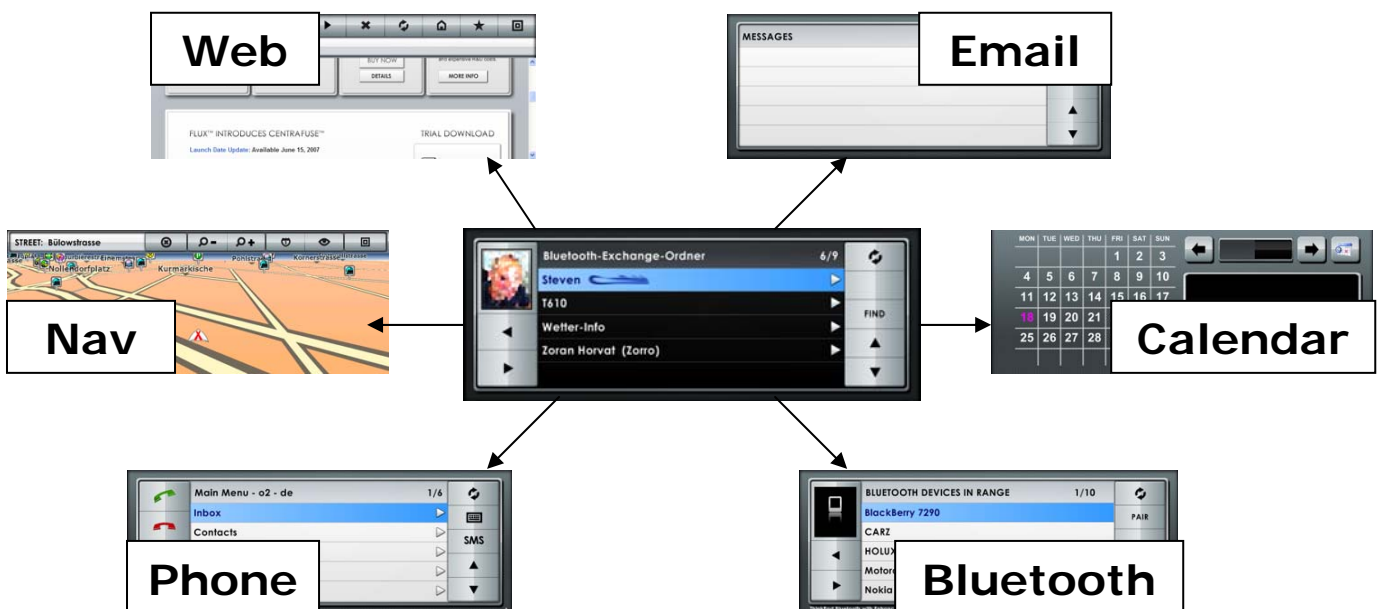
<u>TABLE OF CONTENT</u>	2
<u>WHAT IS IT GOOD FOR?</u>	3
<u>PREREQUISITES</u>	3
<u>INSTALLATION</u>	4
<u>WHERE DO I GET MY CONTACTS FROM?</u>	5
<u>START UP SCREEN</u>	6
<u>PERSONAL DATA</u>	8
<u>BUSINESS DATA</u>	9
<u>INTERNET DATA</u>	10
<u>NOTES DATA</u>	10
<u>ADDING OR REMOVING CONTACTS</u>	11
<u>SETUP DIALOG</u>	12
<u>KNOWN ISSUES</u>	13
<u>NOTE TO SOFTWARE DEVELOPERS</u>	13
<u>LEGAL INFORMATION</u>	14
COPYRIGHT	14
SINGLE COPY LICENSE	14
TERMINATION OF THIS LICENSE	14
DISCLAIMER	14

What is it good for?

This plug-in allows you to handle contacts stored on your local PC within Centrafuse™. It allows you to list all your contacts, browse through each contact and either call the person, send e-mails or set up a new route to the address in the navigation module. This all can be done with a few keystrokes (or using the Touch screen) in a much more convenient way than using any other off-the-shelf software products.

This plug-in may also be used as a replacement for the phone module phonebook (PhoneControl.NET), in case your phone doesn't support categorized numbers ;o)

The Contacts plug-in will communicate with other plug-ins to give you the best possible integration in Centrafuse™, as shown in the picture below:



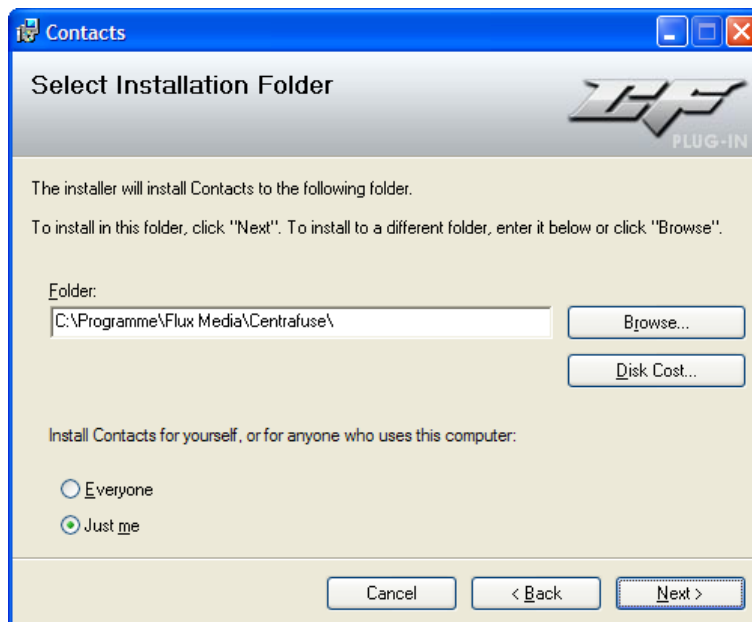
Yet this plug-in only supports read access to the contacts, which means you have no interface integrated to modify them.

Prerequisites

To run this plug-in within Centrafuse™ you don't need much. A folder where your contacts are stored (exported to) is just enough (see next page). If you own a Bluetooth device (phone or PDA) and you have the **BluetoothControl** plug-in installed, you'll be able to send your contacts directly from the device to the PC and they will immediately show up in this plug-in.

Installation

To install Contacts, simply run the **setup.msi** contained in the ZIP file you have downloaded. When the setups prompts you, please check (and correct if necessary) the path where Centrafuse™ is located otherwise you'll be unable to use that plug-in.



As usual, after the installation you will find it in the **Plugins** folder of Centrafuse™.

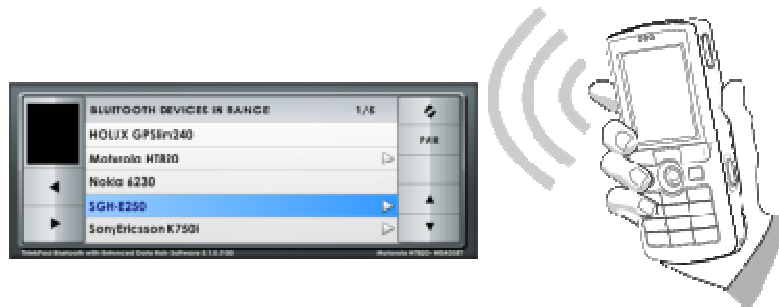
Where do I get my contacts from?

Before you can use the Contacts plug-in, you have to have your contacts available in one specific folder as **vCards**¹. If you, for example, use Microsoft® Outlook™ to manage your contacts, you can go to the contacts folder, select a couple and export them by using **Save as...** function and setting the export filter to **vCard (*.vcf)**.

Note: To use the Contacts plug-in you don't have to have Outlook™ installed on your PC. You can get the exported vCard files on your PC easily by using a File-Sync plug-in for example or copying them manually.

Another approach would be to send all your contacts on your phone or PDA to Centrafuse™ using the **BluetoothControl** plug-in (assuming that you have Bluetooth installed at least).

The vCards sent through Bluetooth will usually be stored in the **\My Documents\Bluetooth Exchange Folder** on your local PC.



Some phone manufacturers (such as Nokia) make the contacts on your phone available through a special File-Explorer extension in case you've installed the Nokia PC Suite. Such extension will add a virtual folder to the file system, where the contacts can be accessed using standard file operations. For more information about this feature please consult the user manual of your phone.

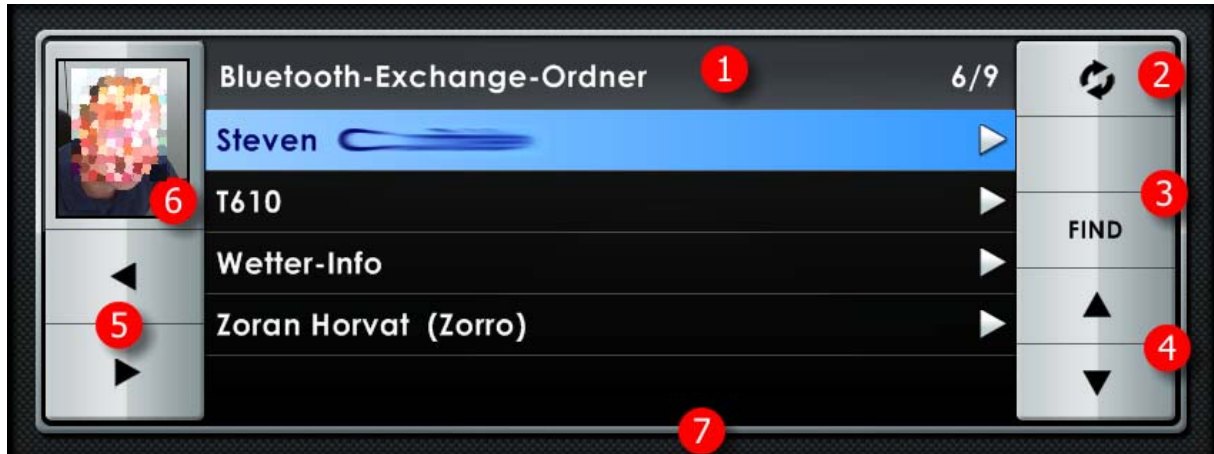
If the software application that ships with your phone to allow you to manage the data on the phone (usually called PC suite) doesn't have such feature, look into the user manual and search for an export function. If such is integrated and it's capable of exporting **vCards**, you're a winner.

Once you have your contacts exported as **vCards**, go to the plug-in Setup dialog, make sure that it is pointing to the right folder and you'll be ready to go.

¹ vCards define a common format to store contacts data. The specification was invented by the **versit** Consortium 1995. Almost each application that cares for contacts supports this format, at least for importing / exporting. The current vCard version is 2.1. A written specification of this format can be found almost everywhere on the Internet (such as [Wikipedia.com](http://en.wikipedia.org/wiki/Vcard)).

Start up screen

After clicking the CONTACTS button, the first screen will show all collected contacts. These contacts will be read out from the folder that you've picked in the setup screen. The following picture shows you the start up screen:



As you see in the picture above, you have several controls to handle this plug-in. These controls are:

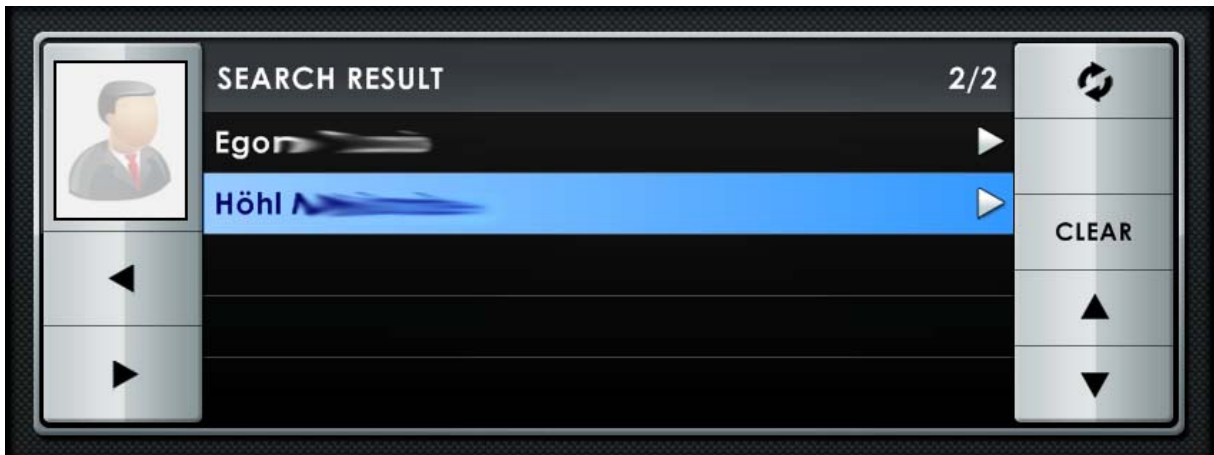
1. The header bar containing the current folder where the contacts come from and the information of how much entries you have in the current list as well as the number of the currently selected item
2. The refresh button that will re-collect the current list
3. The additional buttons (the functions depends on the current level)
4. The scroll buttons for the main list
5. The forward / back buttons to navigate back and forth between the levels.
6. The contact image preview and progress bar area
7. The status bar which will display additional information on demand

The names in the contacts list are sorted alphabetically. If a nick name is assigned to a contact, it'll be written right hand to the name in parenthesis.

To move between the contacts, use either the scroll buttons, the cursor keys on the keyboard or the scroll wheel on your mouse. To browse through the names using the index function, click (or tap) the list and hold it until the index character pops up, then move up-/downward to select the index letter. As you release the mouse button, the list will go to the first entry in the list starting with the selected index letter.

The first additional button will allow you to set up a new navigation route to the home address of your currently selected contact, in case you have the navigation module installed. If the current selected contact does not have an address entry, this button will keep blank and become disabled.

The second additional button on the start up screen allows you to search for any given pattern in all contacts. If the pattern is found, all contacts containing this pattern will be listed. You can browse them as usual. When search results are listed, the second button will show CLEAR, which allows you to clear the search result and go back to the normal operation mode.



With pressing the forward button (or the right cursor key) you will move into the next level, which will show you the available categories of the currently selected contact. The name of the current contact as shown in the header:



There are a maximum of four categories of data that can be assigned to a contact:

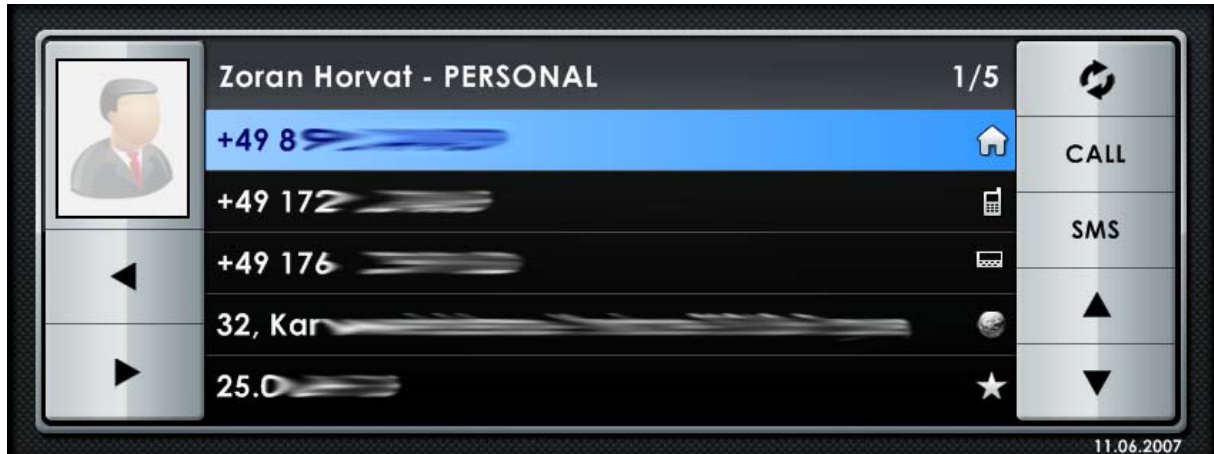
- Personal
- Business
- Internet
- Note

If the current contact doesn't have the data for one of the categories, it won't list this category here. Select a category and hit the forward button to list the data contained within.








Note: If you have assigned a device to this contact (you'll need the BluetoothControl to be able to do that) the header will additionally show the name of the device as it appears in the BluetoothControl devices list.

Personal data

This category shows personal (private) data of the contact, such as private phone numbers, the home address or the birthday. Whenever you're browsing the personal data, the header bar will say "- PERSONAL":



Each entry (or almost) has its own icon to show the data type. Most of them you will recognize as icons taken from the phone module of Centrafuse™. The meaning is just the same as in the phone module but some of them were made especially for the Contacts plug-in:

-  stands for the cell phone number
-  stands for the office (work) phone or mail address
-  stands for the home number
-  stands for the fax number
-  stands for the pager (or an additional) phone number
-  stands for the address (which can be used to navigate to)
-  stands for the birthday

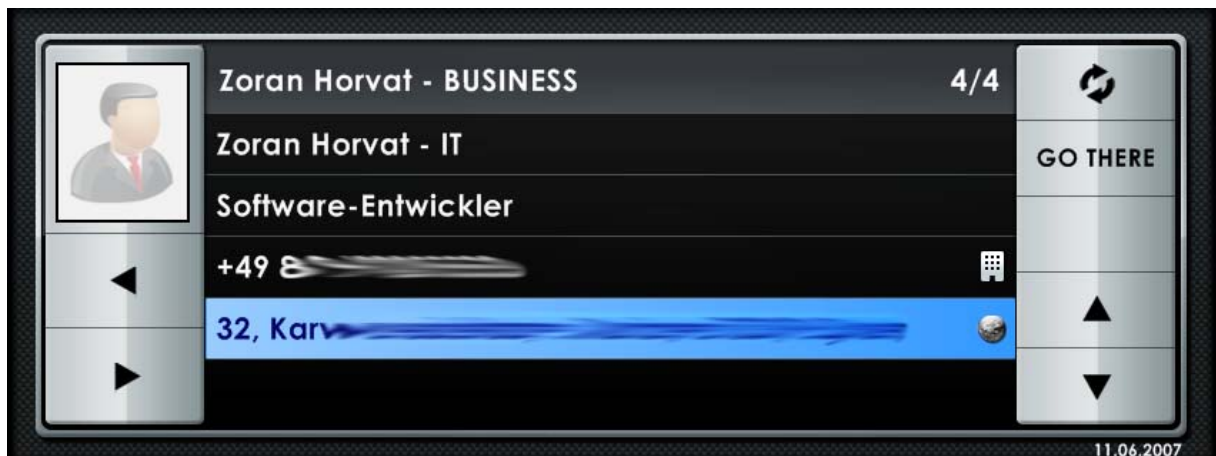
Whenever one of these entries is selected, the additional function buttons will change their text (and the function of course).

- **CALL** means that you can set up a call to this number of the contact, assuming that you have the phone module installed. If the phone module is missing, you won't be able to use this feature.
- **SMS** means that you can send a text message to this number. As you press this button, the Centrafuse™ built in Keyboard dialog will pop up where you're supposed enter the message that'll be sent.
- **GO THERE** will let you set up a new route in the navigation module, if you have the navigation module installed.
- **SHOW CALENDAR** will switch to the calendar plug-in and select the date.



Business data

This category shows business related data of the contact, such as office phone numbers or the office address. Whenever you're browsing the business data, the header bar will say "- BUSINESS":

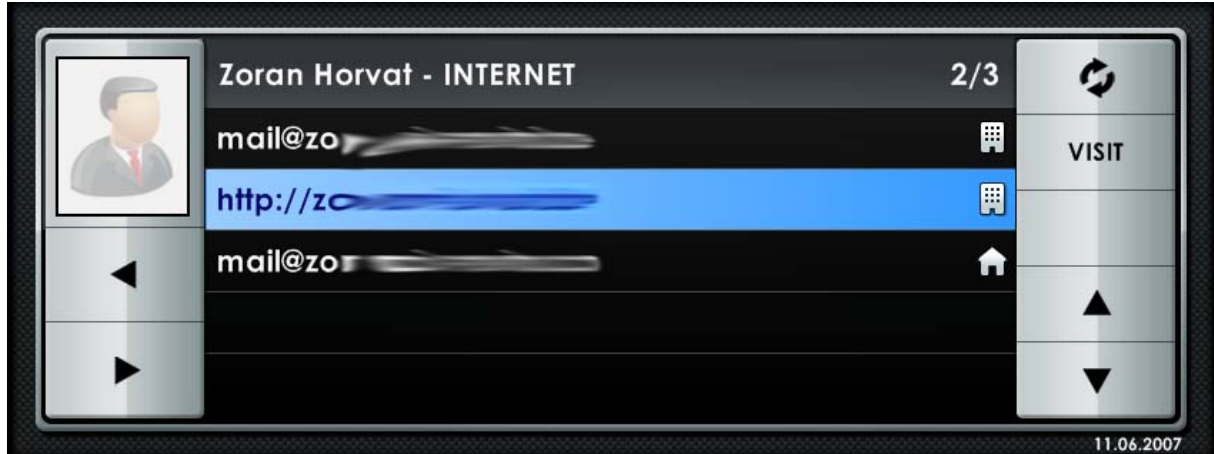


This category shows similar data as the Personal category. The exception here is that you'll see the Company name (if available in the vCard) and the person's position in that company.

The additional buttons have the same functions as described in category **Personal**.

Internet data

This category shows all Internet related data, such as E-mail addresses and URL's.



Whenever one of these entries is selected, the additional function buttons will change their text to:

- **SEND MAIL** means that you're able to send an E-mail to the address selected, in case you have the E-mail plug-in installed².
- **VISIT** means that this will activate the Web browser plug-in and browse the selected URL.

Notes data

This category does not navigate to the next level but rather shows the notes assigned to a contact within a dialog box.

² As you may know, additional plug-ins such as E-mail and Web browser are available at the [Centrafuse™ website](#) for download.

Adding or removing contacts

As stated before, the Contacts plug-in will operate in read only mode since there is no interface to modify the contact data.

However, the plug-in will monitor the configured folder for modifications file system wise. Whenever contacts in this folder are being changed, added or removed, the plug-in will recognize this and update the contacts in your list accordingly.

Therefore, you can remove or add contacts simply by deleting them from the folder or saving (exporting) new contacts to it. If you assign the **Bluetooth Exchange Folder** as source for the contacts plug-in, this will happen every time you receive contacts from the phone or PDA automatically and this will keep your contacts up-to-date.

A special message in the status bar will notify you after such events have occurred.

Setup dialog

The Contacts Setup dialog allows you to modify the settings of this plug-in without modifying the config.xml file manually.



There is not much to tell about the settings here as they are self explaining.

The only thing you have to take care of is to pick the right folder. The default setting will point to the **\My Documents** folder. This folder is individual for each user, so you don't have to worry about sharing the contacts with others.

If you don't know which folder to choose, I'd suggest to leave the default folder or to pick the **\My Documents\Bluetooth Exchange Folder** if you use BluetoothControl as well.

Known issues

- You'll need at least version **1.20** of Centrafuse™ and the latest version of the E-mail and Calendar plug-ins to use all functions integrated.
- **SHOW CALENDAR** is not implemented yet (will come as soon as a new Calendar plug-in is available).
- Only English and German languages are supported. If you run Centrafuse™ under another language, English will be used as default (feel free to translate the language file and send it to me).

Note to Software Developers

This version of the Contacts plug-in does not implement any plug-in to plug-in communication interface but if you're about to create a new plug-in that needs to handle contacts, please drop me a mail and we can work something out.

Legal Information

Copyright

© Copyright by Zoran Horvat 2007.

Single Copy License

The Contacts plug-in is copyrighted and any unauthorized use of any materials may violate copyright, trademark, and other laws. You may download one copy of the software on a single computer for your personal, non-commercial internal use only unless specifically licensed to do otherwise by Zoran Horvat in writing or as allowed by any license terms which accompany or are provided with individual Materials.

Termination of this license

Zoran Horvat may terminate this license at any time if you are in breach of the terms of this Agreement. Upon termination, you will immediately destroy the Materials.

Disclaimer

THE MATERIALS ARE PROVIDED "AS IS" WITHOUT ANY EXPRESS OR IMPLIED WARRANTY OF ANY KIND INCLUDING WARRANTIES OF MERCHANTABILITY, NONINFRINGEMENT OF INTELLECTUAL PROPERTY, OR FITNESS FOR ANY PARTICULAR PURPOSE. IN NO EVENT SHALL ZORAN HORVAT OR ITS SUPPLIERS BE LIABLE FOR ANY DAMAGES WHATSOEVER (INCLUDING, WITHOUT LIMITATION, DAMAGES FOR LOSS OF PROFITS, BUSINESS INTERRUPTION, LOSS OF INFORMATION) ARISING OUT OF THE USE OF OR INABILITY TO USE THE MATERIALS, EVEN IF ZORAN HORVAT HAS BEEN ADVISED OF THE POSSIBILITY OF SUCH DAMAGES. BECAUSE SOME JURISDICTIONS PROHIBIT THE EXCLUSION OR LIMITATION OF LIABILITY FOR CONSEQUENTIAL OR INCIDENTAL DAMAGES, THE ABOVE LIMITATION MAY NOT APPLY TO YOU.