

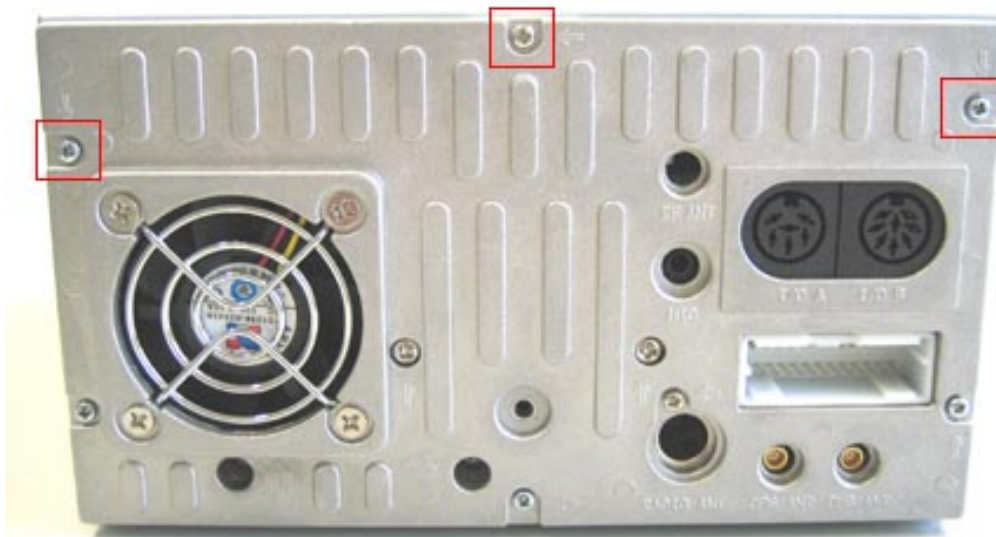
Assembling tutorial: Infill G4 double-DIN CarPC Barebone

The following components are used in this tutorial:

- 2.5" 40 GB ATA HDD
- Slimline Slot-In DVD drive
- 512 DDR2 SO-RAM
- Infill G4 double-DIN CarPC



We start with the removing of the 3 red marked screws and taking off the cover of the enclosure:



The mount unity (for DVD drive and HDD) gets removed afterwards.
Before installing the slot-in DVD drive, the front of the DVD drive has to be removed:



CARTFT.COM
Shop for mobile
PC- and GPS-Solutions

Power Up Your Car

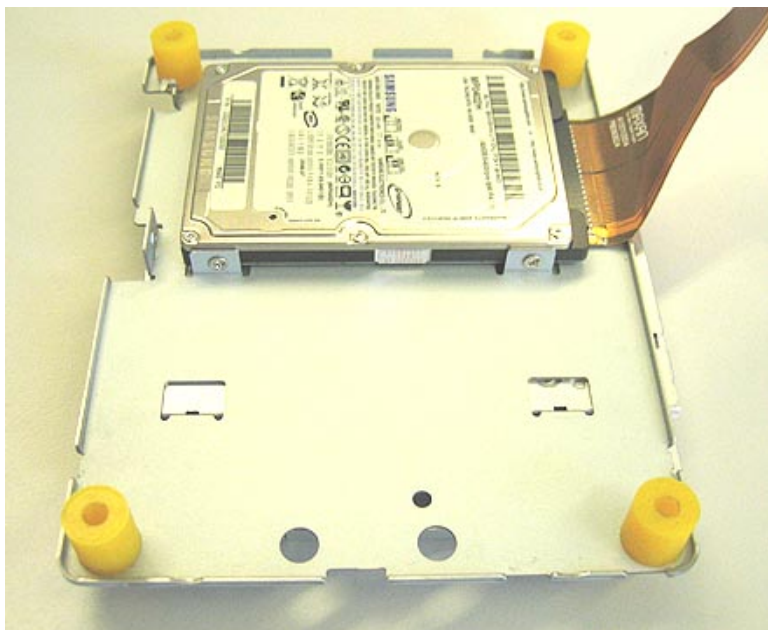


removing the front of the DVD drive

The DVD drive gets screwed at the mount unity subsequently:



The hard disk which moreover is provided with the enclosed adapter and the flat ribbon cable is fastened on the back of it:



Continuing with the enclosure: You have to remove the two screws (red marked in the picture) and then raise the board from behind:



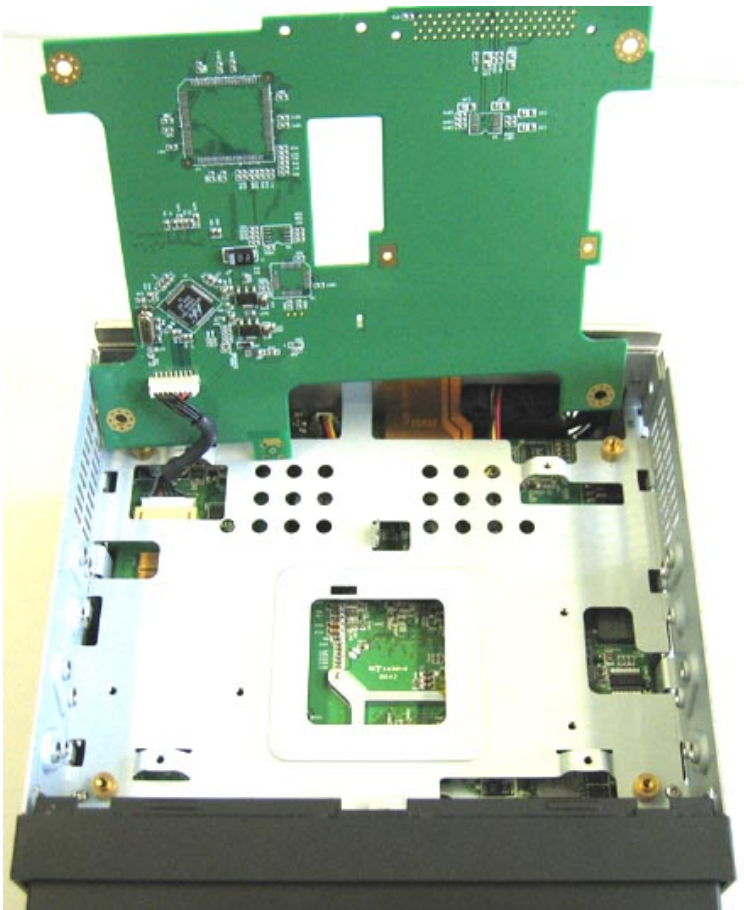
CARTFT.COM

Shop for mobile
PC- and GPS-Solutions

Power Up Your Car



To remove the board completely, the cable has to be plugged off:

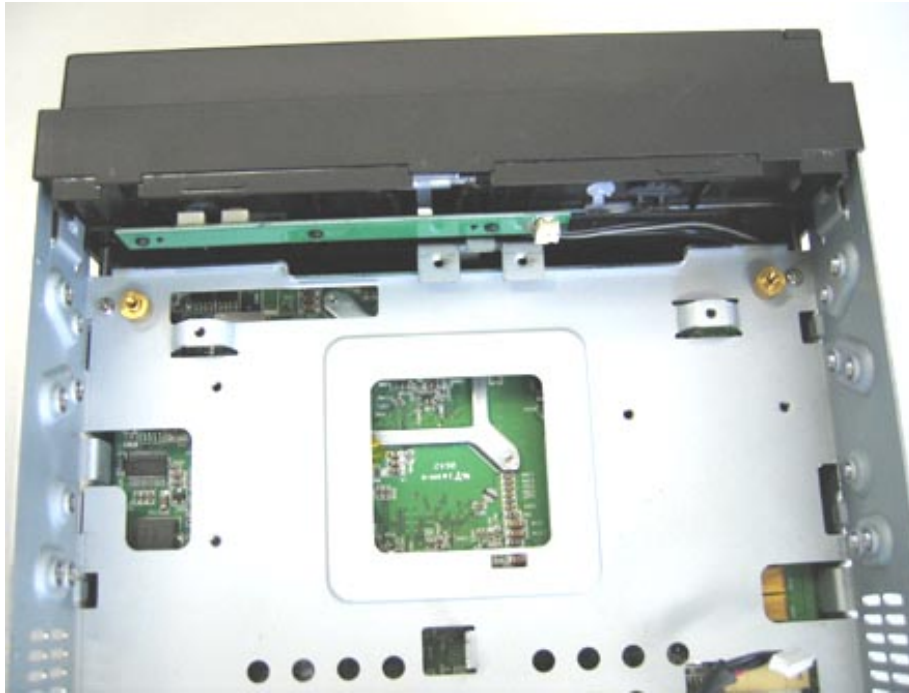


The screws near the golden screw thread get removed:



CARTFT.COM
Shop for mobile
PC- and GPS-Solutions

Power Up Your Car



The plastic part (red marked in the picture) has to be pushed in a little bit, so that the front side can be opened out:

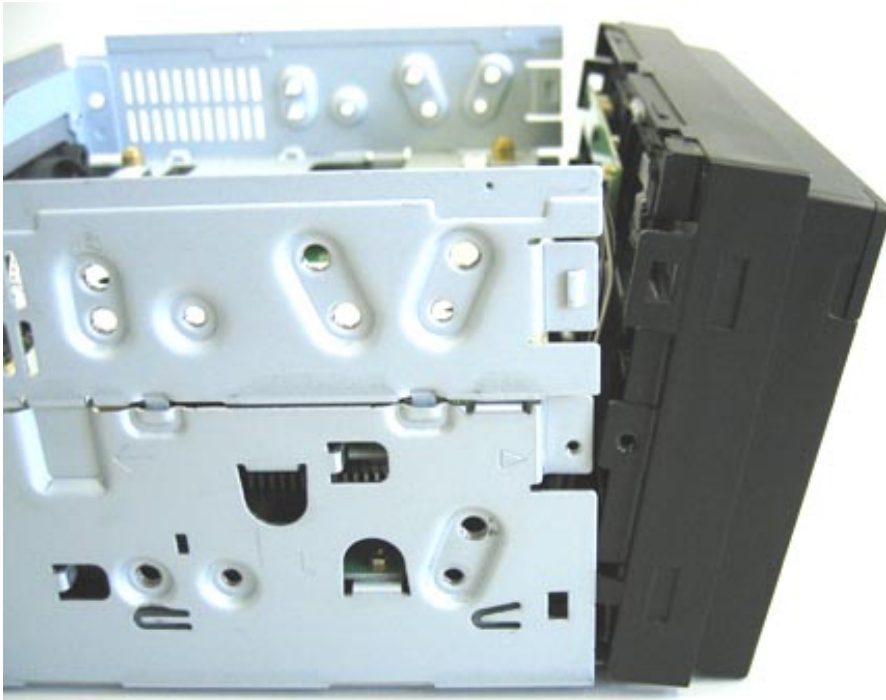


So it looks opened out:



CARTFT.COM
Shop for mobile
PC- and GPS-Solutions

Power Up Your Car



Then you can remove the last part of the enclosure:



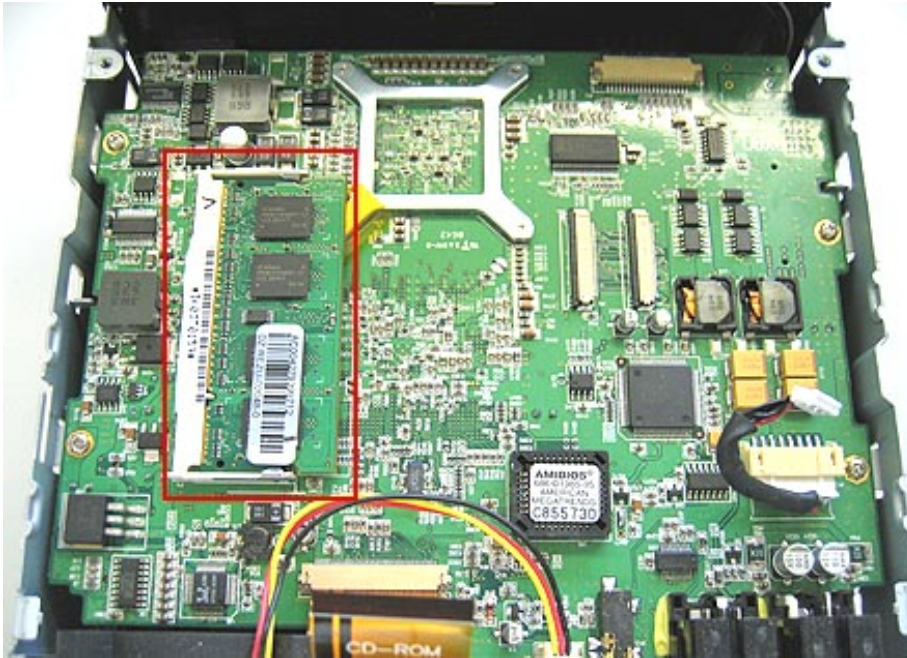
Now the RAM module gets installed:



CARTFT.COM

Shop for mobile
PC- and GPS-Solutions

Power Up Your Car



You put on the last part of the enclosure again and you screw it in tight. Then the board gets insert, which gets connected with the cable and it also is screwed in tight. Then the HDD ribbon cable gets connected correctly and the mount unity gets insert afterwards:



Now the ribbon cable gets connected to the DVD drive, the board gets screwed tight and the cover of the enclosure gets put-on and the barebone gets screwed on:



The PC-system is now assembled.

