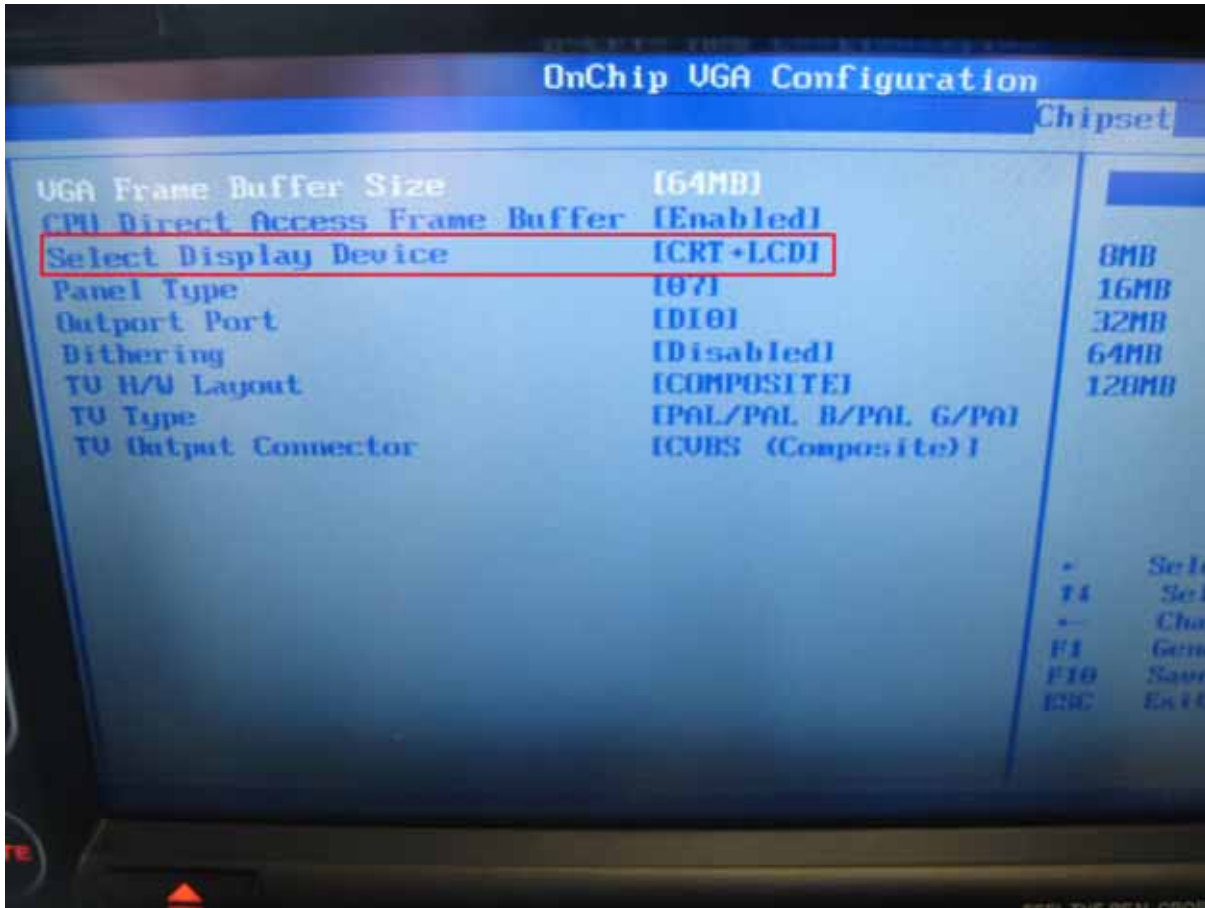




## Infill G4 Multi-Monitor Support

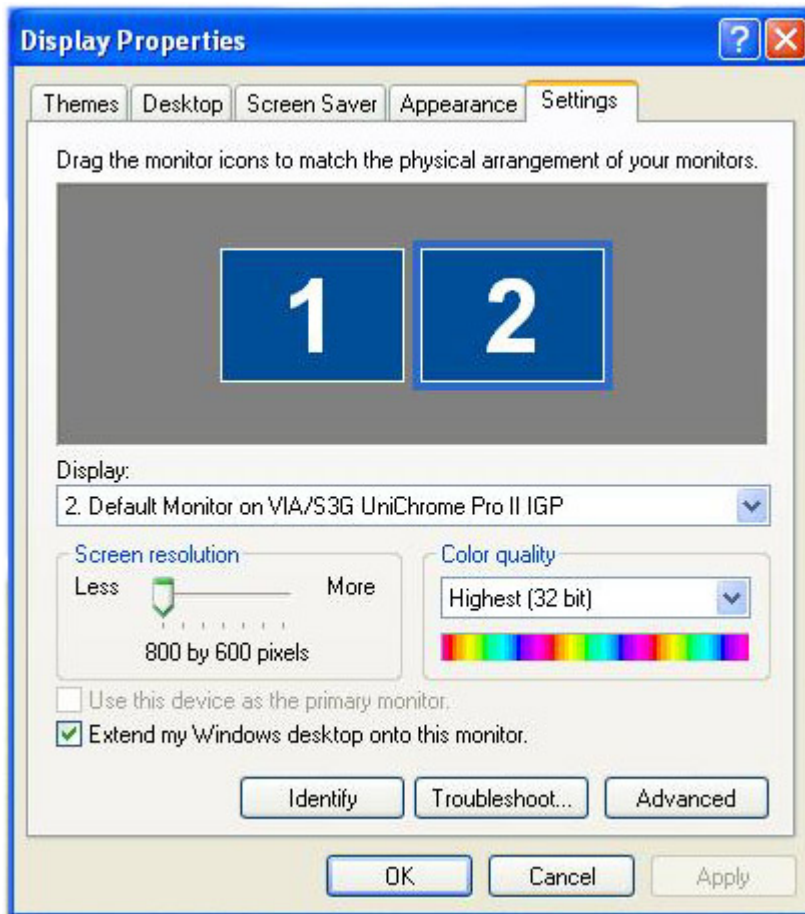
For enabling a second display at the additional VGA port on Infill G4 you first need to get into system BIOS. By pressing “ENTF” (or “DEL”)-key at boot up time.

Get into submenu “Chipset“, „Northbridge VIA CX700 Configuration“, AGP & P2P Bridge Configuration“, On Chip VGA Configuration and choose under „Select Display Device“ : CRT + LCD“.



Connect your second display and boot up the system into Windows.

After system has finished booting, enter display settings and choose “settings”.



Choose the second display and set a check on „Extend my Windows desktop onto this monitor“

Now the desktop gets extended to the second display.

12.06.2008, Timo Decristan